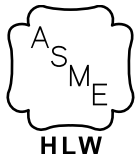


Ac-U-Temp COMMERCIAL HOT WATER SUPPLY SYSTEMS

The "TOTAL SYSTEM" Concept - We have taken our highly efficient equipment and created a convenient package; a complete domestic hot water system.



- The installer simply connects the flue, gas, electric supply, cold water make-up, and hot water supply (Building return loops connect to cold water make-up.)
- These complete hot water systems are factory engineered and assembled to assure proper pipe, pump and wiring sizing
- Systems are pre-piped and wired to guarantee maximum system efficiency
- Each Ac-U-Temp system is hydrostatic and fire tested before shipping from the factory
- Each Ac-U-Temp storage tank is especially designed with tank opening locations that provide maximum tank draw efficiency and eliminate any unnecessary piping and connections
- The Ac-U-Tanks are factory standard ASME constructed steel tanks with the same superior glass lining that has set new standards for the tank industry
- Tank capacities range from 80 gallons to 2,500 gallons (other tank sizes available). Heating up capacities ranging from 120,000 up to 1.2 mIn BTU
- ASME Temperature and Pressure Relief Valve 125#
- Tank Temperature Sensor
- Tank Thermometer
- Isolation Valves (Reliable Ball Valves)
- Channel Iron Skid
- 125 PSI Tank Construction
- Factory sized and supplied pump
- All Ac-U-Temp Systems are built-to-order, and can be precisely designed to specifically meet your specifications
- Many combinations of heaters and tanks are available. Consult your local A.O. Smith Representative for factory assistance.
- High recovery systems that can meet any hot water demand
- Heaters can be on & off fired, or sequenced to meet changing system demands
- Solutions for applications with low ceiling heights or unique installation challenges
- Ac-U-Temp storage tanks can be specified with heat exchangers; allows winter/summer heating operation
- Options:
 - 125, 150 and 160 PSI tank construction options, depending upon the size of the tank
 - 12" x 16" Manholes
 - Cement and Epoxy Tanks Linings



SAMPLE SPECIFICATION

The Hot Water Supply System - shall consist of A. O. Smith Ac-U-Temp® factory assembled system Model No. _____. System shall be completely factory assembled and shall include the A. O. Smith copper heat exchanger circulating water heater(s), with input of _____ BTU/H for _____ gas and recovery capacity of _____ gph, and the A. O. Smith glass-lined (cement/epoxy) hot water storage tank with _____ gallons capacity for _____ mounting (vertical-horizontal). System shall include properly sized circulator, inlet and outlet thermometers, tank temperature thermometer, relief valve, and tank temperature control. Entire system shall be rigidly mounted on welded steel skid base and shipped assembled to job site (Ac-U-Temp systems employing tanks too large for shipping as an assembled unit, will be shipped with the tank mounted on a split bolt-together skid).

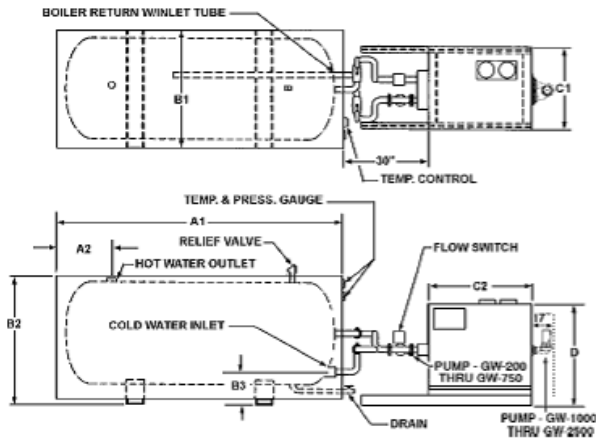
Custom packaged solutions

A.O. Smith will work with you to configure and assemble the components and framing to meet your specific water heating and site needs.

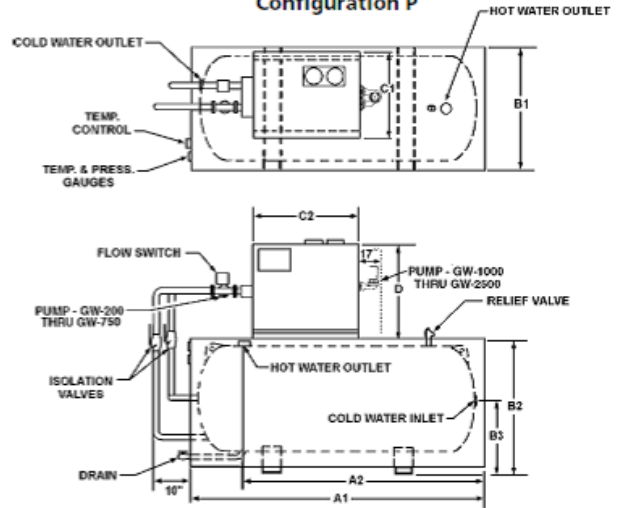
You can configure systems using:

- Burkay Genesis
- Burkay circulating water heaters

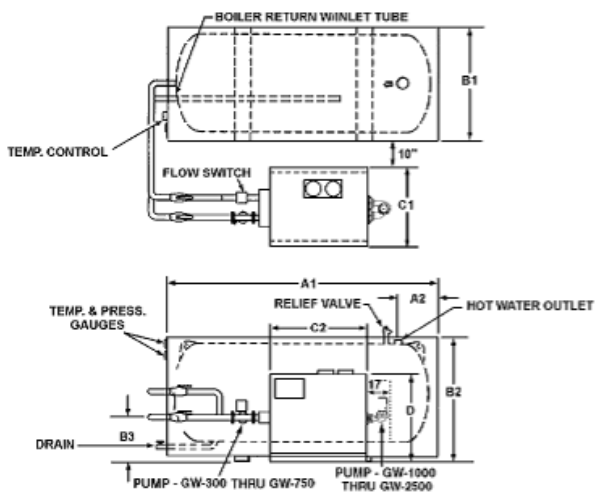
Configuration H



Configuration P



Configuration S



Configuration V

