

A. O. SMITH
GREEN SERIES



EXPERT SERVICE

☎ 1800-103-2468/1860-500-2468

☎ +91 99410 32468 (Send SMS) or

✉ aosmithcs@aosmithindia.com

Monday to Friday: 9 a.m. to 8 p.m.

Saturday & Sunday: 9 a.m. to 6 p.m.

For calls registered at A. O. Smith Call Centre before 4 p.m. only.
Available only in selected cities. For more details, please call our
1800-103-2468/1860-500-2468 or log on to www.aosmithindia.com







Dear Customer,

Congratulations and welcome to A. O. Smith family.

We thank you for the trust you have shown in choosing the A. O. Smith Water Purifier.

A. O. Smith Water Purifier is one of the most advanced RO Water Purifier available in the market today. It is specially designed keeping in mind today's water quality and your needs.

Millions of customers all over the world trust A. O. Smith Products for their quality and workmanship.

Our customer-centric approach manifests itself in many other ways too. If you need any information or assistance with your Water Purifier, just call us from any phone, anywhere in the country to our **Customer Care No. 1800-103-2468/1860-500-2468**.

Please go through this simple and easy to read instruction and installation manual to get the best out of your A. O. Smith RO Water Purifier.

We once again thank you for choosing A. O. Smith.

Yours Sincerely,

Team A. O. Smith

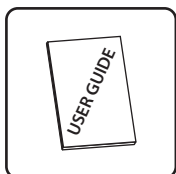
Contents

Key Features of your A. O. Smith Z8 & Z9 RO Water Purifier	01
Pre-instruction literature	03
General instructions	04
Introduction	05
Product overview	07
Function of indicators	09
Water flow	12
Electrical diagram.....	13
Safety precautions.....	14
How to use.....	16
Draining drip tray.....	22
How to maintain your product.....	24
Troubleshooting	25
Technical specifications	28
FAQs.....	30
Warranty terms and conditions	33
Warranty card	37
Service and maintenance	38
Disclaimer	39

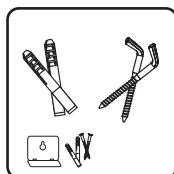
What's in the box?



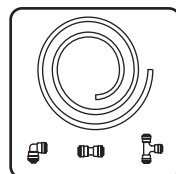
Water Purifier



User Guide



Mounting Accessories



Tube & Connectors

Key Features of your A. O. Smith Z8 & Z9 RO Water Purifier



PURITY THROUGH 8 STAGE PURIFICATION

8S TECHNOLOGY: Pre-filter + Sediment filter + Carbon block + ART™ (Advance Recovery Technology™) + Patented Side Stream RO Membrane + MIN-TECH (Mineraliser Technology) + ZX Double Protection Dual Filter* (Silver Activated Post Carbon block + SCMT). In A. O. Smith **Z8 & Z9** RO Water Purifier 100% of the water passes through the RO Membrane and Double Purified by SCMT.



ART™ (ADVANCE RECOVERY TECHNOLOGY™)

Breakthrough Advance Recovery Technology™ gives true water recovery > 55%*, while ensuring 100% RO purification.



RO + SCMT (SILVER CHARGED MEMBRANE TECHNOLOGY)

SCMT is an additional stage of purification to prevent any potential secondary microbial contamination post RO purification. Double protection ensures purified and healthy water.



MIN-TECH (MINERALISER TECHNOLOGY)

The MIN-TECH (Mineraliser Technology) adds essential minerals to the water. This ensures that the water tastes fresh and natural and has balanced pH – an essential requirement for drinking water.



HOT WATER AT A PRESS OF BUTTON

Only RO in India that gives you purified hot water with added minerals at two temperature choices.



ONE TOUCH DISPENSING

To dispense water instantly at the press of a button. (Only with A. O. Smith **Z9**)



ADVANCE ALERT TECHNOLOGY

For RO membrane and other filters change.



INDIA'S FIRST RO WITH NIGHT ASSIST

Glow effect guides you to your Water Purifier at night and makes your kitchen look good.

* Patent Applied | *TDS: 750 ppm, Water temperature 27°C, Water feed pressure 20 psi.



CONVENIENCE

Pure water storage capacity of 10 litres. Provision for both wall mounting & table top.



DIGITAL

Digital display for simple and intelligent display of information.



WQA CERTIFIED RO MEMBRANE

RO membrane element in A. O. Smith **Z8** & **Z9** RO Water Purifier is tested and certified by WQA against NSF/ANSI 58 standards for material requirements.

Pre-instruction Literature

On Receipt

It is our policy to promote safe delivery of all orders. This product shipment has been thoroughly checked, packed and quality certified before leaving our plant.

Visible Loss or Damage

If any of the goods called for on the bill of lading or express receipt are damaged or the quantity is short, do not accept them until the freight or express delivery agent makes an appropriate notation on your freight bill or receipt.

Concealed Loss or Damage

When a shipment has been delivered to you in apparent good condition, but upon opening the crate or container, loss or damage has taken place while in transit, inform the carrier's agent/A. O. Smith representative immediately.

About this Manual

This manual is a guide to good practice for operating and periodic maintenance of the A. O. Smith **Z8 / Z9** RO Water Purifier.

This does not contain the full servicing procedures necessary for continued successful operation of this product. The services of A. O. Smith Company Authorised Service Technician must be employed periodically on the same.

Do not operate before reading manual supplied with this product.

Please follow instructions in this manual to ensure personal safety and proper operation of this product. A. O. Smith assumes no liability for installation or servicing performed by any unauthorised personnel. Always install, operate, inspect and maintain this product in accordance with all applicable standards. Please store this user manual carefully for any future reference.

General Instructions

Safety

Your safety and the safety of your loved ones is paramount to us. There are several safety-related messages in this manual, which have been provided during various stages such as installation, operation and maintenance of your A. O. Smith **Z8/Z9** RO Water Purifier. These messages point out potential hazards and also educate on how to reduce any potential risks. Please always read and follow all safety messages as provided in this manual.



This is the safety alert symbol. This symbol alerts you to potential hazards that can hurt you and others. All safety messages will follow the safety alert symbol and either the word “DANGER” or “WARNING”.



Indicates an imminently hazardous situation which, if not avoided, will result in death or serious injury.



Indicates a potentially hazardous situation which, if not avoided, could result in death or serious injury.



Indicates a potentially hazardous situation which, if not avoided, may result in minor or moderate injury or property damage.

IMPORTANT

These instructions have been written as a guide for the proper installation and operation of your A. O. Smith **Z8/Z9** RO Water Purifier. A. O. Smith will not accept any liability where these instructions have not been followed. However, for your safety and to avoid damage caused by improper installation, it is recommended that Water Purifier must be installed by A. O. Smith Company Authorised Service Technician only.

Before proceeding with the installation instructions:

1. Inspect the A. O. Smith **Z8/Z9** RO Water Purifier and its component parts for possible damage. DO NOT install or attempt to repair any damaged component parts. If you detect any damage in your A. O. Smith **Z8/Z9** RO Water Purifier, please contact the company through Customer Care Centre, details of which are mentioned in this manual and on the product.
2. Verify that the voltage being supplied corresponds to that which is mentioned in the A. O. Smith **Z8/Z9** RO Water Purifier manual.

Note: This manual refers to the two models **Z8** RO Water Purifier and **Z9** RO Water Purifier. Based on the product purchased, customer needs to refer the respective illustrations.

Introduction

A. O. Smith **Z8/ Z9** RO Water Purifier uses one of the latest technologies that is used in water purification process. A. O. Smith **Z8/ Z9** RO Water Purifier works under the principle of RO (Reverse Osmosis) technology which is found to be one of the most effective process. In this process, water under pressure is passed through a semi-permeable membrane. Purified water is collected for drinking in a storage tank and impurities in the water are flushed to the drain.

Why water purification is important?

Water purification, today is essential due to the presence of harmful contaminants present in the water supply. Rapid urbanisation and speedy industrial growth have led to significant pollutants and contaminants being found in the water supply. Below is a list of some of the harmful contaminants found today in the water supply which if consumed in excess can be detrimental to human health.

- TDS (Total Dissolved Solids) like Nitrates, Chlorides, Sulphates etc.
- Pesticides and VOC (Volatile Organic Compounds).
- Heavy metals like Mercury, Arsenic, Lead, Chromium, Cadmium etc., imbalanced pH.
- Microorganisms such as pathogenic bacteria, virus, protozoa and cysts.

A. O. Smith **Z8/ Z9** RO Water Purifier removes excessive TDS (Total Dissolved Solids) in water by more than 95%. A. O. Smith **Z8/ Z9** RO Water Purifier reduces heavy metals, removes pathogens and balances the pH value. By this, it ensures you safe and great tasting water.

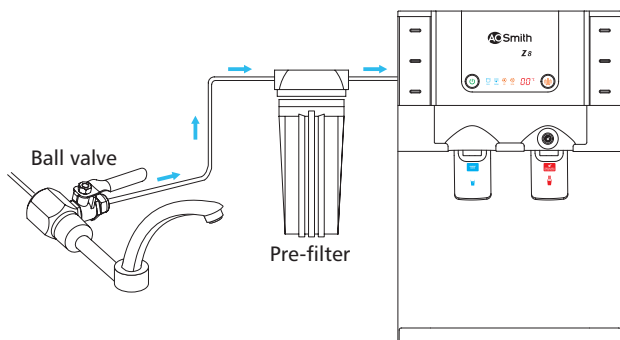
How does A. O. Smith **Z8/ Z9** RO Water Purifier work?

A. O. Smith **Z8/ Z9** RO Water Purifier has 8 stages of purification system, wherein the water is passed through the various stages and progressively filtered to get purified water which is stored in the inbuilt storage tank.

- **Stage 1 – Pre-filter**
The Pre-filter is used to remove physical contaminants such as dirt, dust, soil particles, turbidity present in the water. This improves the life of the Sediment filter.
- **Stage 2 – Sediment filter**
The Sediment filter is used to remove fine and coarse physical contaminants present in the water. This improves life of the Carbon block filter and ensures efficient working of RO membrane.
- **Stage 3 – Carbon block**
The Carbon block filter uses carbon block with high adsorption capacity which reduces harmful chemicals including pesticides, volatile organic compounds, residual chlorine etc., from water. It also adsorbs bad taste and odour causing organic compounds from water.

- **Stage 4 – ART™ (Advance Recovery Technology™)**
The ART™ is scale control media which conditions the water to reduce scaling potential in water.
- **Stage 5 – RO (Reverse Osmosis) membrane**
RO membrane contains semi-permeable membrane wherein the water is passed through the semi-permeable membrane to remove TDS (Total Dissolved Solids) and heavy metals like mercury, arsenic, lead, chromium, cadmium etc. It also removes microorganisms like bacteria, virus, protozoa and cysts.
- **Stage 6 – MIN-TECH (Mineraliser Technology)**
The MIN-TECH contains Calcium and Magnesium minerals which helps to improve the taste and quality of water. It adds the required essential minerals back to water and balances the pH of water.
- **Stage 7 and Stage 8 – ZX Double Protection Dual filter***
This is a dual filter where water is passed through Silver Activated Post Carbon block which acts as polisher and enhances the taste of water. In the final stage water is passed through SCMT (Silver Charged Membrane Technology) filter which ensures double purification of water making it Safe & Healthy for drinking.

Figure 1

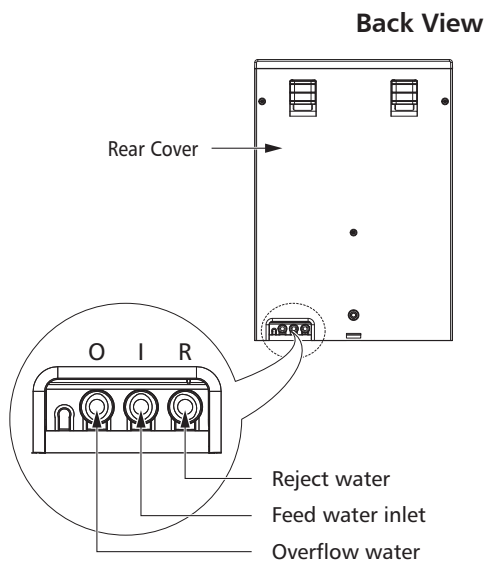
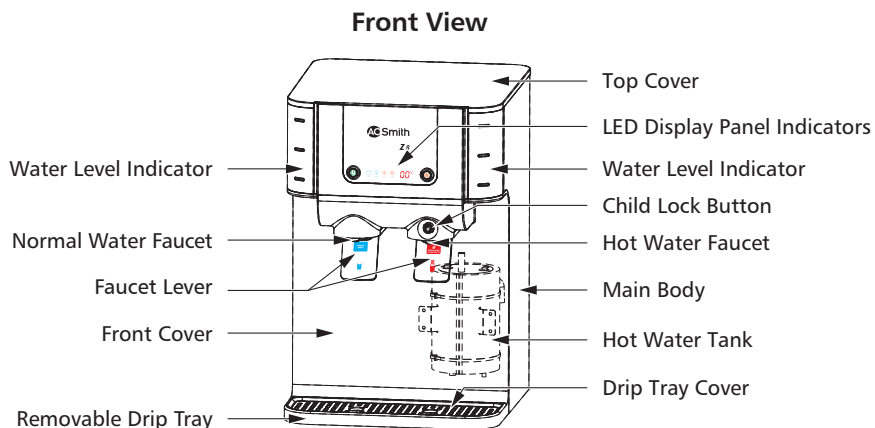


Note: The Pre-filter and the Ball valve comes along with the product as standard accessories.

Product Overview

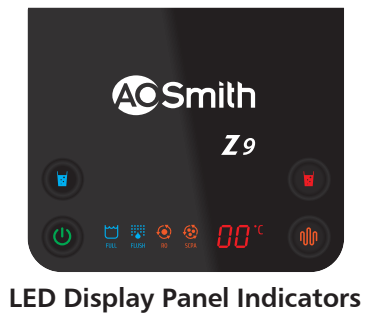
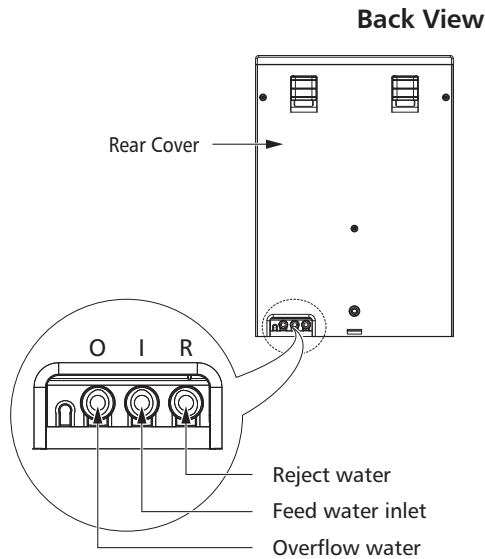
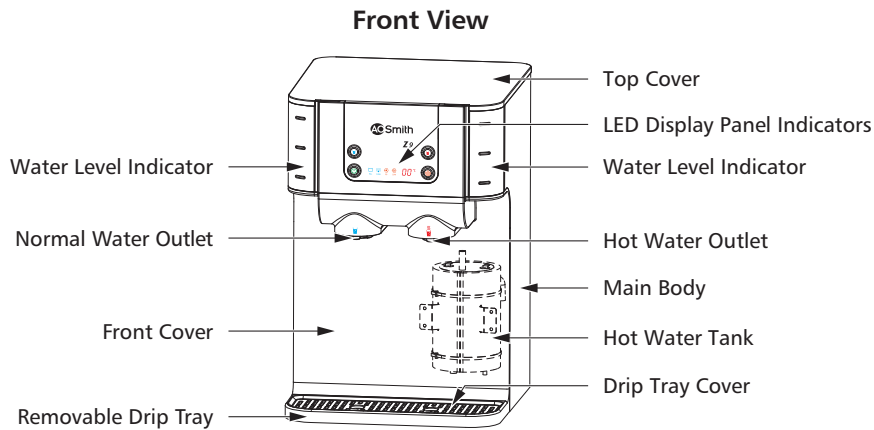
A. O. Smith Z8 RO Water Purifier

Figure 2



A. O. Smith Z9 RO Water Purifier

Figure 3



Function of indicators

Power Button

This button is used to switch ON/OFF the Water Purifier.

- When the Power button is blinking, check feed water supply to the purifier.

Tank full indicator FULL

This indicates that the Water Purifier tank is full.

- When there is an overflow, the indicator starts to blink with continuous beep till it is fixed.

Note: Call A. O. Smith Customer Care Centre if you notice continuous blinking of Tank full indicator.

Auto-flush indicator FLUSH

This indicates flushing is in progress. Every time the water purification process is activated, the auto flushing mechanism cleans the RO membrane. It enhances the life of RO membrane.

Note: Call A. O. Smith Customer Care Centre if you notice continuous blinking of Auto-flush indicator.

RO change indicator RO

This indicates that the RO membrane needs to be replaced.

- RO change indicator starts blinking (buzzer 10 times) indicating that the RO membrane life is reaching its end time.
- When RO membrane life reaches its end, RO change indicator keeps on blinking and the unit stops functioning.

Note: Call A. O. Smith Customer Care Centre to replace the RO membrane.

SCPA change indicator

SCPA

This indicates that the pre and post RO filters need to be replaced.

- SCPA change indicator starts blinking (buzzer 10 times) indicating that the pre and post RO filters life is reaching its end time.
- When pre and post RO filters life reaches its end, SCPA change indicator keeps on blinking and the unit stops functioning.

Note: Call A. O. Smith Customer Care Centre to replace the pre and post RO filter.

Temperature indicator

This indicates the temperature of water inside the hot water tank and displays the Error codes in case of fault in the Water Purifier.

Note: Call A. O. Smith Customer Care Centre if you notice any Error messages (Refer page 27).

Water Heating Button

This purifier is capable of dispensing warm water (45°C) and hot water (80°C) as per customer's desire. This button is used to heat the water inside the hot water tank of the purifier.

Child Lock Button (for A. O. Smith Z8 only)

As a safety feature, to prevent hot water from being dispensed accidentally and possibly harming a child, this button is used to unlock the hot water faucet.

Normal Water Button (for A. O. Smith Z9 only)

This button is used to dispense normal water from the purifier.

Hot Water Button (for A. O. Smith Z9 only)

This button is used to dispense hot water from the purifier.

Child Lock (CL) (for A. O. Smith Z9 only)

As a safety feature, to prevent hot water from being dispensed accidentally and possibly harming a child, the hot water button can only be operated when the child lock is disabled. To learn more about this feature, refer page 20.

Water flow

Figure 4

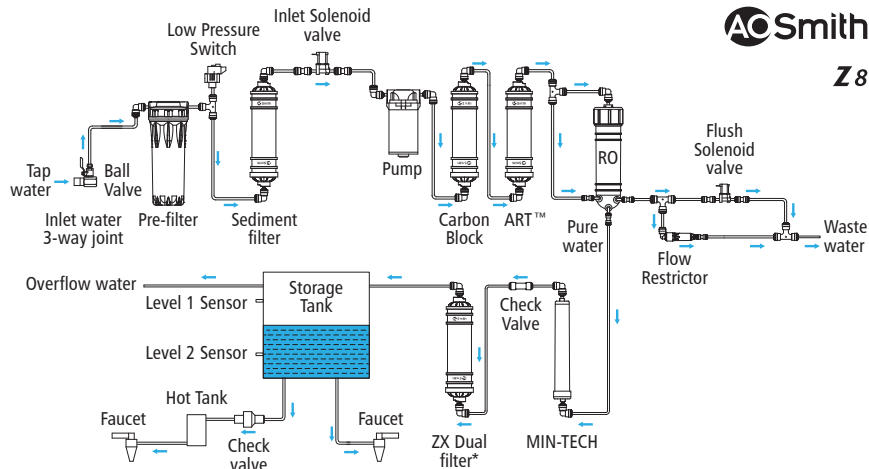
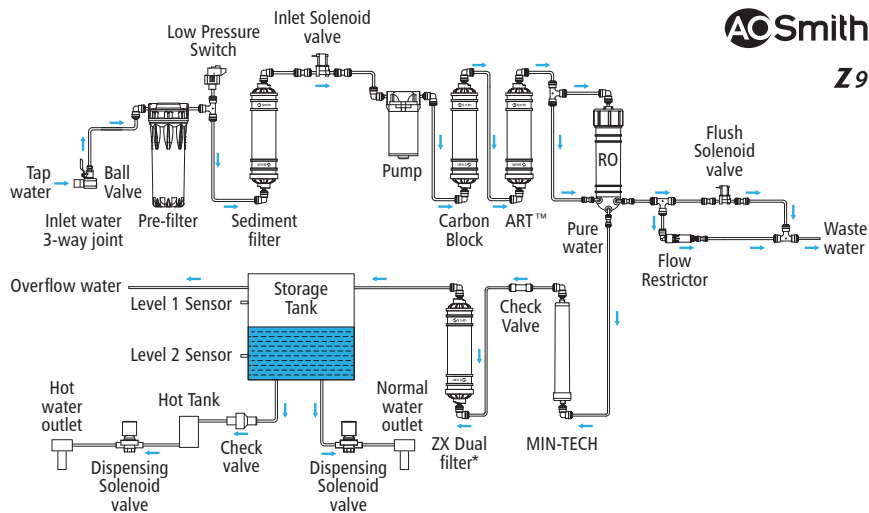


Figure 5



* Patent Applied

Electrical diagram

Figure 6

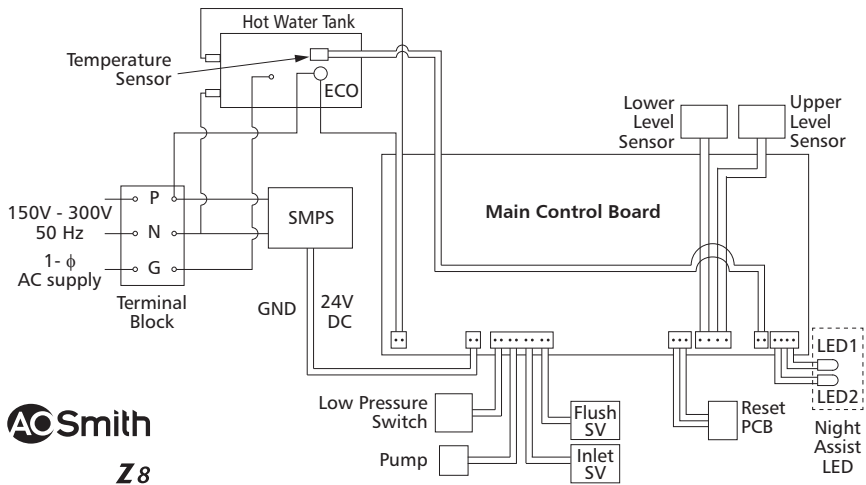
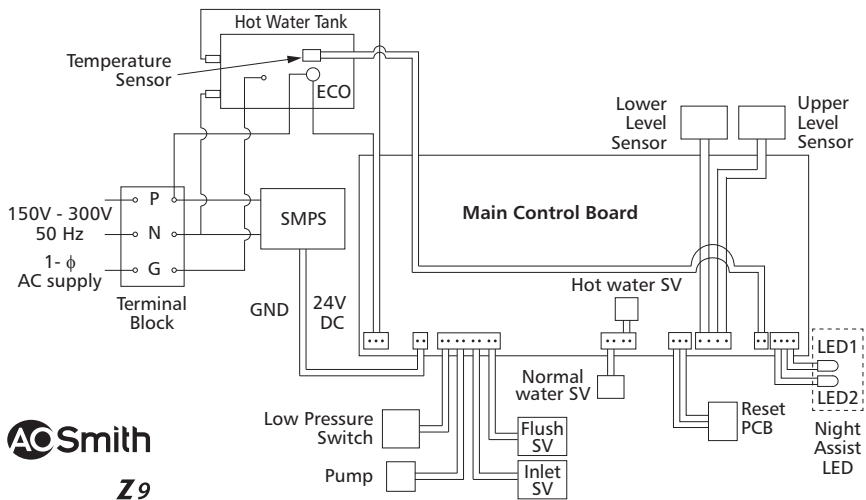


Figure 7



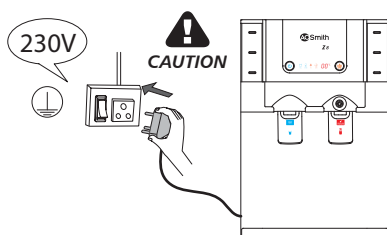
Safety Precautions

Electrical safety

Even though this product is designed keeping highest safety standards in mind, there are certain Do's and Don'ts which need to be followed while using this product.

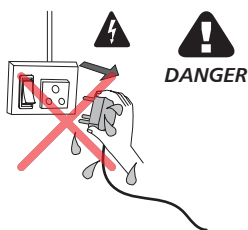
Power plug must be used with a grounded 230V outlet. It is recommended to connect the product to the power supply only with the plug that is provided with the purifier. (Figure 8)

Figure 8



Do not pull out or touch power plug with wet hands to avoid electrical shock. (Figure 9)

Figure 9



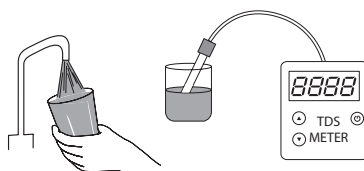
Install the product away from direct sunlight. (Figure 10)

Figure 10



Make sure that the feed water is tested before installation. Do not install the product if the TDS and Hardness are more than that prescribed in the recommended feed water conditions (Refer page 29). (Figure 11)

Figure 11



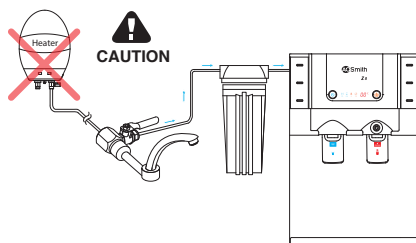
Product should be installed only by A. O. Smith Company Authorised Service Technician. Do not open the purifier for cleaning the filters or for any part replacements. This must be done only by A. O. Smith Company Authorised Service Technician. (Figure 12)

Figure 12



Do not connect hot water to the product. (Figure 13)

Figure 13



When it is used

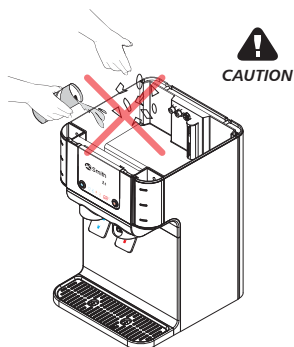
Do not put heavy objects on the product. (Figure 14)

Figure 14



Do not put foreign objects or hand inside the purifier. (Caution is needed, especially for children). (Figure 15)

Figure 15



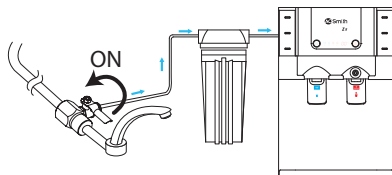
Note: It is recommended not to switch off the Water Purifier and/or turn off the water supply to the product when it has not been used for more than 24 hrs. The purifier has an inbuilt cleaning mechanism which cleans the RO membrane every 24 hrs by flushing it. This feature protects the RO membrane and ensures longer life.

How to use

A. O. Smith Z8

1. Turn ON the water connection through the ball valve. (Figure 16)

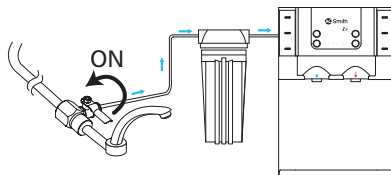
Figure 16



A. O. Smith Z9

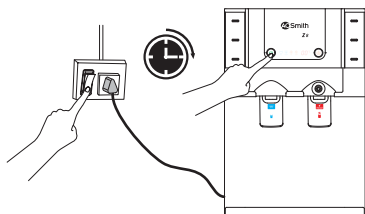
1. Turn ON the water connection through the ball valve. (Figure 17)

Figure 17



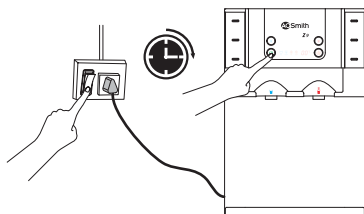
2. Switch ON the power supply and press the power button of the purifier. (Figure 18)

Figure 18



2. Switch ON the power supply and press the power button of the purifier. (Figure 19)

Figure 19

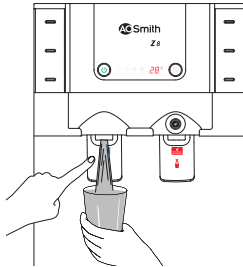


A. O. Smith Z8

To dispense normal water

1. To dispense normal water from the storage tank, push and hold the normal water faucet lever. (Figure 20)

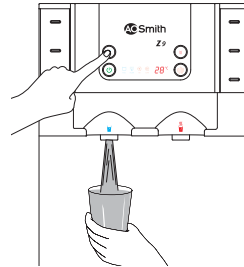
Figure 20



A. O. Smith Z9

1. To dispense normal water from the storage tank, press the normal water button once, the normal water button LED glows. To stop water flow, press the normal water button again, the normal water button LED will be turned off. (Figure 21)

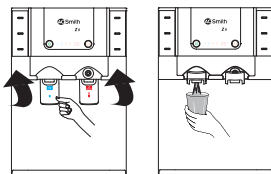
Figure 21



Note: Normal water flows for 3.5 minutes (approx.) and stops automatically, when normal water button is not pressed to stop water flow.

2. To dispense normal water continuously, lift up the normal water faucet lever for continuous water flow. To stop the water flow, pull down the normal water faucet lever. (Figure 22)

Figure 22



A. O. Smith Z8

Setting to Warm/Hot water temperature.

This purifier is capable of dispensing at two temperature choices, warm water (45°C) and hot water (80°C).

Setting to warm water temperature (45°C)


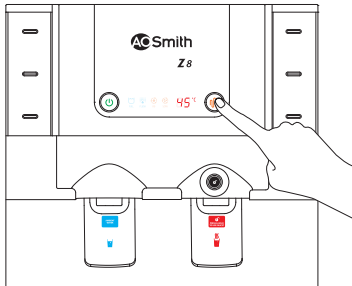
1. Press the water heating button  once. This will set temperature to 45°C which will be displayed on LED.
2. When water heating button glows, it indicates heating has started. The LED display shows the current water temperature.
3. Once the temperature reaches 45°C, the heating stops.

Figure 23



A. O. Smith Z9


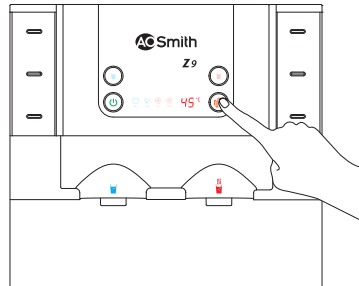
1. Press the water heating button  once. This will set temperature to 45°C which will be displayed on LED.
2. When water heating button glows, it indicates heating has started. The LED display shows the current water temperature.
3. Once the temperature reaches 45°C, the heating stops.

Figure 24



A. O. Smith Z8

Setting to hot water temperature (80°C)


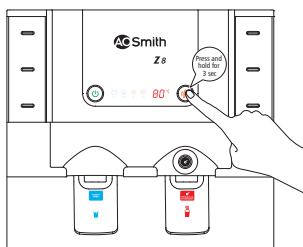
1. Press and hold the water heating button  for 3 seconds. This will set temperature to 80°C which will be displayed on LED.
2. When water heating button glows, it indicates heating has started. The LED display shows the current water temperature.
3. Once the temperature reaches 80°C, the heating stops.

Figure 25



A. O. Smith Z9


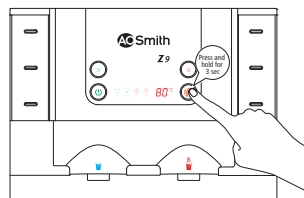
1. Press and hold the water heating button  for 3 seconds. This will set temperature to 80°C which will be displayed on LED.
2. When water heating button glows, it indicates heating has started. The LED display shows the current water temperature.
3. Once the temperature reaches 80°C, the heating stops.

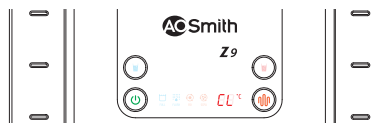
Figure 26



NOTICE

1. The child lock is automatically enabled whenever the water temperature is more than 50°C for 30 seconds.
2. When the child lock is enabled, **CL** will be displayed for every 5 seconds.
3. If the water temperature is less than 50°C, the child lock gets automatically disabled and water can be dispensed directly by pressing hot water button.

Figure 27



A. O. Smith Z8

To dispense hot water



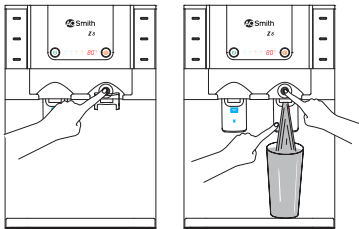
1. Press the child lock button  once, to unlock the hot water faucet.
While pressing the child lock button , push and hold the hot water faucet lever to dispense the hot water. (Figure 28)

Figure 28




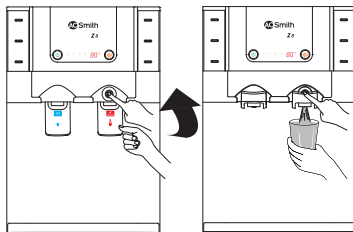
2. To dispense water continuously, lift up the hot water faucet lever first, then press the child lock button  to dispense hot water. To stop the water flow, pull down the hot water faucet lever. (Figure 30)

Figure 30

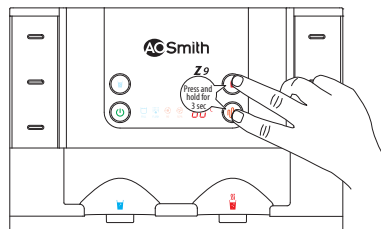


A. O. Smith Z9

To dispense hot water, first disable CL (Child Lock) (if water temperature is more than 50°C, CL is displayed.)

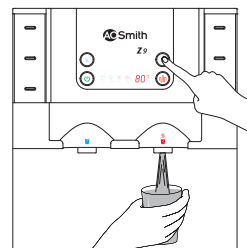
1. Press and hold the water heating button and hot water button simultaneously for 3 seconds, UL (Unlock) will be displayed with beep sound. The Child Lock will be disabled for 30 seconds (approx.). (Figure 29)

Figure 29



2. To dispense hot water from the storage tank, press the hot water button once, the hot water button LED glows. To stop the water flow, press the hot water button again, the hot water button LED will be turned off. (Figure 31)

Figure 31



Note: Hot water flows for 3.5 minutes (approx.) and stops automatically, when hot water button is not pressed to stop water flow.

DANGER



Scalding

Hot water is dangerous, especially for children, aged or the disabled. The Water Purifier allows you to control the temperature of your hot water. Water temperatures over 52°C can cause severe burns due to scalding.

NOTICE

- Discard the first cycle of pure water, before you start using it for consumption.
- Make sure to discard the water from the storage tank if you have not used the purifier for more than 2 days.

How to drain water from storage tank

To drain water completely from the purifier, use only the hot water faucet. Drain till you have drained two tank full of water.

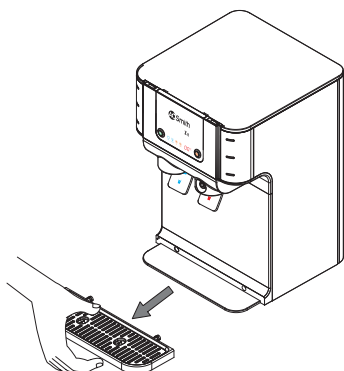
Draining Drip Tray

We have provided removable Drip Tray with the product. In case there is spillage of water, it gets collected in Drip Tray.

A. O. Smith Z8

1. Remove the Drip Tray assembly by pulling forward. (Figure 32)

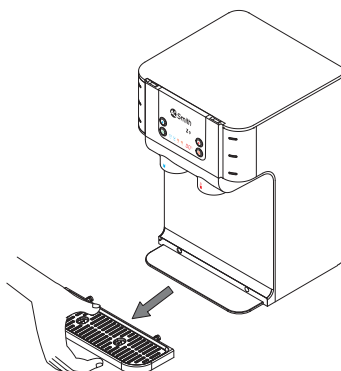
Figure 32



A. O. Smith Z9

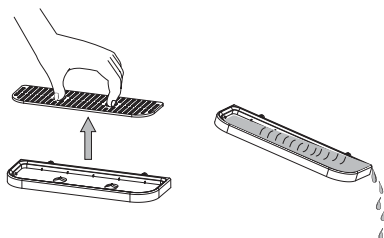
1. Remove the Drip Tray assembly by pulling forward. (Figure 33)

Figure 33



2. Remove Drip Tray cover by pulling upward and then drain completely. (Figure 34)

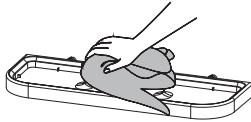
Figure 34



A. O. Smith Z8

3. Clean the surface of water tray with a soft cloth. (Figure 35)

Figure 35



A. O. Smith Z9

4. Re-attach the Drip Tray assembly into the purifier. (Figure 36)

Figure 36

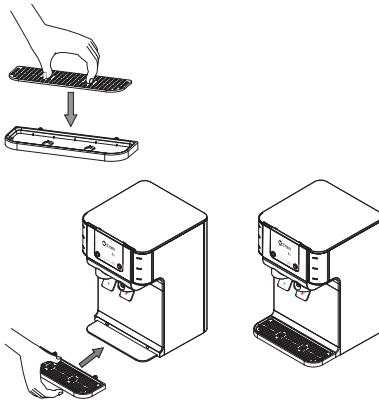
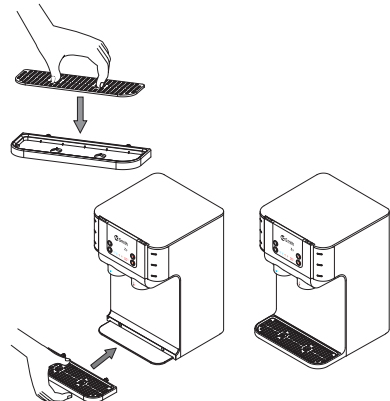


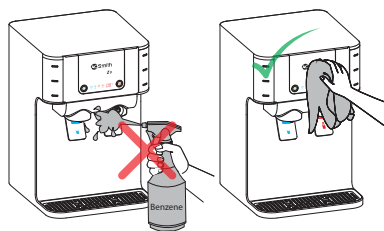
Figure 37



How to maintain your product

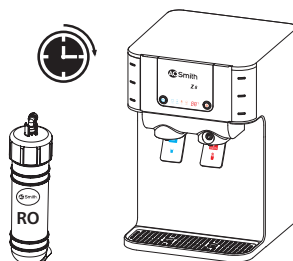
Do not splash water directly or clean with benzene, pesticides, thinner, alcohol, etc., but use a soft, dry cloth to clean the purifier. (Figure 38)

Figure 38



Replace filters regularly according to the replacement indications. This must be done only by A. O. Smith Company Authorised Service Technician. (Figure 39)

Figure 39



Use A. O. Smith genuine accessories only, for optimal performance of the purifier. (Figure 40)




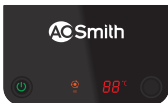


Figure 40




Troubleshooting







Your A. O. Smith **Z8 / Z9** RO Water Purifier may not function at its desired capability if used incorrectly. This may not necessarily mean that the product is faulty. For instances like these, please follow the steps given below to troubleshoot the problem without help from a certified technician. If the problem still persists, please call Customer Care Centre immediately.

Problems	Check-up	Solution
Change in water taste.	Has the purified water been stored in the tank for a long time?	Drain the stored water from the storage tank through faucet.
	RO membrane/filters may require replacement.	Call Customer Care Centre for replacement.
	Has the raw water quality changed?	Call Customer Care Centre.
	Check if there is no water flow through reject line.	Switch OFF the Water Purifier and call Customer Care Centre.
Decreased flow of purified water.	Check whether the tap/ball valve is closed.	Open the tap/ball valve.
	RO membrane/filters may be clogged or damaged.	Call Customer Care Centre for filters replacement.
Less/No reject water.	Check if the reject water tube is bent.	Clear the bent in the reject water tube.
	Check if the reject water tube is blocked.	Switch OFF the Water Purifier and call Customer Care Centre.
Less/No purified water.	Check whether there is water supply in the tap.	If not, take the help of a plumber to set it right.
	Check whether tap/ball valve is closed.	Open the tap/ball valve.
	Check if either RO change or SCPA change is blinking.	Call Customer Care Centre for replacement of filters.
	None of the above.	Call Customer Care Centre.
No hot water.	Check whether the storage tank is full.	Wait until the storage tank gets filled.
	Fault in check valve.	Call Customer Care Centre.
Water not dispensing when normal water button or hot water button is pressed (for A. O. Smith Z9 only).	Check whether power supply is switched ON.	If power supply is ON and still no water dispenses, call Customer Care Centre.

<p>Buzzer beeps and tank full LED blinks continuously.</p> 	<p>Overflow error.</p>	<p>Switch OFF the Water Purifier and call Customer Care Centre.</p>
<p>Buzzer beeps for 8 times and power LED blinks continuously.</p> 	<p>Low pressure alarm is triggered indicating that the system input water pressure is not in the required range.</p>	<p>Check feed water supply to the purifier. If problem still persists, switch OFF the Water Purifier and call Customer Care Centre.</p>
<p>Buzzer beeps and auto-flush LED blinks continuously.</p> 	<p>Level sensor error.</p>	<p>Switch OFF the Water Purifier and call Customer Care Centre.</p>
<p>Buzzer beeps 10 times, RO change LED blinks and unit is functioning.</p> 	<p>RO membrane life is about to end.</p>	<p>Call Customer Care Centre for RO membrane replacement.</p>
<p>Buzzer beeps 10 times, RO change LED blinks and unit is not functioning.</p> 	<p>RO membrane life ends.</p>	<p>Switch OFF the Water Purifier and call Customer Care Centre for RO membrane replacement.</p>
<p>Buzzer beeps 10 times, SCPA change LED blinks and unit is functioning.</p> 	<p>Pre and Post RO filters life is about to end.</p>	<p>Call Customer Care Centre for Pre and Post RO filters replacement.</p>

<p>Buzzer beeps 10 times, SCPA change LED blinks and unit is not functioning.</p> 	<p>Pre and Post RO filters life ends.</p>	<p>Switch OFF the Water Purifier and call Customer Care Centre for Pre and Post RO filters replacement.</p>
---	---	---

Error Messages and Actions

Error Code/ Error Description	Unit Response	Solution
E1 (Element connection fault) 	Buzzer beeps for 10 seconds and hot water supply has been stopped.	Call Customer Care Centre.
E2 (High Temperature Alarm) 	Buzzer beeps for 10 seconds and hot water supply has been stopped.	Call Customer Care Centre.
E3 (NTC Sensor Alarm) 	Buzzer beeps for 10 seconds and hot water supply has been stopped.	Call Customer Care Centre.
E4 (EEPROM error) 	Internal PCB error.	Call Customer Care Centre.
E5 (Water level sensor error) 	Buzzer beeps for 10 seconds, auto-flush LED blinks continuously and the purifier stops working.	Switch OFF the Water Purifier and call Customer Care Centre.
E6 (Battery error) 	Buzzer beeps continuously and Power, Flush and Tank full LED blinks continuously.	Switch OFF the Water Purifier and call Customer Care Centre.

Technical Specifications

Model	A. O. Smith Z8 & Z9 RO
Product Dimensions (H x D x W)	482 mm x 369 mm x 326 mm
Net weight	10.8 kgs (approx.)
Gross weight	15.2 kgs (approx.)
Flow rate*	Up to 15 litres per hour
Storage tank capacity	9.2 litres (approx.)
Storage tank capacity (Hot tank)	0.8 litres (approx.)
Purification technology	RO (Reverse Osmosis) + Silver Charged Membrane Technology
8 Stage Purifying Technology	Pre-filter + Sediment filter + Carbon Block + ART™ + Side Stream RO membrane + MIN-TECH + ZX Double Protection Dual Filter ⁺ (Silver Activated Post Carbon block + SCMT).
Membrane type	Thin film composite RO membrane
Material of construction for plastic parts	Food safe, non-toxic, engineering grade plastics
Pump type	Diaphragm pump, 24VDC, 0.45 Amps at 80 psi
Input voltage range	150 – 300 VAC, 50 Hz
Power rating (Max.)	60 Watts
Pressure Rating***	7 psi to 30 psi
% Recovery**	Up to > 55%*
TDS reduction**	≥95% (approx.)
Heating element wattage	500 Watts @ 230 VAC
Warm water temperature	45°C ± 5°C
Hot water temperature	80°C ± 5°C
Emergency cutout temperature	90°C ± 3 °C
Input water temperature	5°C to 45°C

* Flow rate depends on variable factors such as feed water pressure, feed water characteristics and condition of the RO membrane and filters.

** Recovery and TDS reduction percentages also depend on variable factors such as life and condition of the RO membrane and filters, feed water pressure and feed water characteristics.

*** If input pressure exceeds 30 psi, a pressure reducing valve needs to be installed at the feed line. If the pressure is lower than 7 psi, a booster pump needs to be installed. Ensure you buy them from A. O. Smith Company Authorised Service Technician.

+ Patent Applied.

♦ As tested with input water TDS of 750 ppm, Water temperature of 27°C and feed pressure of 20 psi.

Recommended input Feed water quality for the optimum performance of your product

RECOMMENDED FEED WATER QUALITY	
Parameter	Limits
Total Dissolved Solids (TDS)	Up to 2000 ppm
Total hardness	Up to 500 ppm
Turbidity	Up to 5 NTU
Iron	0.3 ppm (max.)
Feed water pressure	7 psi to 30 psi
Feed water temperature	5°C to 45°C

Warranty details/Recommended filter change:

As per the warranty, all the filters, including RO membrane needs to be replaced when the SCPA change and RO change indicator blinks (Refer page 9 and 10). This would be 1 year (approx.) assuming daily consumption of 10 Liters per day of purified water.

FAQs

1. What is A. O. Smith Z8/ Z9 RO Water Purifier?

A. O. Smith Z8/ Z9 RO is advanced 8 stages RO from A. O. Smith. It is 100% RO with no bypass of water for maximum purity. It is double purified by SCMT (Silver Charged Membrane Technology) and required essential minerals are added back to water. It has options to draw normal, warm and hot water.

2. Does it have provision of hot water?

Yes, you can draw hot water from A. O. Smith Z8/ Z9 RO Water Purifier.

3. What temperature for hot water?

It has 2 temperature choices. With the first press, the water will heat up to 45°C and upon pressing for 3 seconds, the water will heat upto 80°C.

4. Is warm/hot water readily available?

It is very convenient to get warm/hot water from your A. O. Smith Z8/ Z9 RO Water Purifier. For warm water at 45°C, press the water heating button once and within 2 minutes (approx.) you will get warm water. For hot water at 80°C, press and hold the water heating button for 3 seconds and in about 5 minutes (approx.) you can draw hot water.

5. What is night assist?

India's first RO Water Purifier with night assist technology along with light at the point of water dispensing. It is designed for the ease of taking a glass of water in the middle of night. It also keeps your kitchen beautifully illuminated.

6. What is child lock protection?

India's first RO with child lock feature inbuilt to meet the international standards of safety for you and your loved ones. It is designed to ensure protection from hot water spillage when you don't intend to take.

7. Does it give cold water?

No, it gives water at normal temperature and at 2 hot water temperature choices.

8. What is 100% RO with mineraliser?

In ordinary RO+UV Water Purifiers, some amount of water is made to bypass the RO membrane. With this, heavy metals, unwanted salts and pesticides also pass through. In A. O. Smith Z8/ Z9 RO Water Purifier, 100% of the water is passed through the RO membrane which ensures maximum purity of water and required minerals are added back to pure water.

9. How many stages A. O. Smith Z8/ Z9 RO has? And what are the stages?

A. O. Smith Z8/ Z9 RO has 8 stages of purification which are Pre-filter + Sediment filter + Carbon block + ART™ (Advance Recovery Technology™) + RO membrane + MIN-TECH (Mineraliser Technology) + ZX Double Protection Dual Filter* (Silver Activated Post Carbon block + SCMT).

10. What is SCMT?

Silver Charged Membrane Technology is double purification of water after the RO membrane to ensure absolute purity.

* Patent Applied

11. **What is RO+SCMT?**
It is unique double purification process to ensure absolute purity of water.
12. **Does it retain minerals?**
Yes, A. O. Smith **Z8 / Z9** RO Water Purifier has an additional mineral filter (MIN-TECH) which adds essential minerals back to water.
13. **What is MIN-TECH?**
MIN-TECH is Mineraliser Technology to add essential minerals back to water.
14. **What is the storage capacity of A. O. Smith Z8 / Z9 RO Water Purifier?**
It has total capacity of 10 litres, 9.2 litres for ambient temperature water and 800 ml for hot water.
15. **What is the purification flow rate of A. O. Smith Z8 / Z9 RO Water Purifier?**
Up to 15 litres per hour, purification capacity also depends on water quality, condition of filters and RO membrane.
16. **Does it have Pre-filter? Is it free?**
Yes, A. O. Smith **Z8 / Z9** RO Water Purifier comes with a Pre-filter which is part of the product.
17. **What all alerts do A. O. Smith Z8 / Z9 RO Water Purifier has?**
A. O. Smith **Z8 / Z9** RO Water Purifier has advance alerts technology to change the filter and RO membrane.
18. **When does the A. O. Smith Z8 / Z9 RO Water Purifier indicate a filter change?**
The first notification is indicated when the consumption of the filter life is at 90%. When the filter life consumption is at 100%, the Water Purifier automatically stops functioning.
19. **What is the nature of indication for the change in filter?**
On the first intimation when the filter life is at 90%, the respective filter indicator will start to blink. On 100% filter life consumption, the blinking will be replaced with a constant light in the respective indicator.
20. **In the A. O. Smith Z8 / Z9 RO Water Purifier, what is the life of the RO membrane?**
RO membrane would last for 1 year (approx.) assuming a per day consumption of 10 litres, under the input water norms.
21. **What is the digital display in A. O. Smith Z8 / Z9 RO Water Purifier?**
Digital display in A. O. Smith **Z8 / Z9** RO indicates 1) Tank full, 2) Flushing of RO membrane, 3) Change of SCPA (Pre and Post RO filters), 4) Change of RO membrane, 5) Temperature indicator and error indicator.
22. **Can A. O. Smith Z8 / Z9 RO Water Purifier be mounted on the wall and can it be table top?**
Yes, A. O. Smith **Z8 / Z9** RO Water Purifier can be mounted on the wall or can be placed on the counter.

Recommended uses of waste water

Although the rejected water has high concentration of TDS (Total Dissolved Solids) and hardness. If required it can be used for the following:

1. It can be used for watering the garden and plants.
2. It can be used for mopping and cleaning the floors.

Note: Please consult A. O. Smith Customer Care Centre before using this water.

Warranty Terms and Conditions

Product Warranty

A. O. Smith India Water Products Private Limited ("A. O. Smith or Company") warrants this Water Purifier ("product") against the defects arising from faulty design, workmanship and material subject to the following terms and conditions:

1. All electrical, functional parts and filters are warranted for one (1) year from the date of original purchase.
2. The customer shall notify the Company promptly about any defects noticed and give the Company or its representative adequate opportunity to inspect, test and rectify. Customer shall handover the product, if necessary, with the Company office/ Authorised Service Provider along with invoice in the city where it was purchased.
3. The Company or its representative will be entitled to retain any defective parts replaced under warranty on free of charge basis.
4. The Company's liability under the warranty will be limited only to the product and its defects which occur under conditions of normal operations, under proper usage and maintenance. It excludes defects occurring due to abuse, faulty care, maintenance, repair or alteration to the product or to its parts by unauthorised personnel.
5. The Company's liability under this warranty shall be limited to the first purchaser/end user and will not apply to subsequent sale by original purchaser/end user. However, repaired part(s) will be warranted for the remaining period of original warranty term.
6. It is mandatory to provide the original bill/invoice copy along with duly stamped warranty card at the time of any repair work being done by authorised representative. Date of original purchase is determined by the date of the original bill/invoice copy. However, if invoice/bill is not found with customer, customer data with the Company records will be used to determine the date of original purchase and will be treated as final. If details are not found from the Company records, manufacturing warranty as per the product serial number will be used as date of original purchase.
7. While A. O. Smith will make reasonable efforts to carry out repairs/replacement of parts under warranty within reasonable time, it is expressly made clear that A. O. Smith shall not be responsible to complete the said services within any specified period of time.
8. In the event of any unforeseen circumstances, and spares are not being available, the A. O. Smith's prevailing depreciation rules will be binding on customer to accept as commercial solution in lieu of repairs.

9. If an identical model is no longer available due to a change in law, regulation, or standard, A. O. Smith will replace the product with one having a similar capacity and input. In these instances, the customer will have the option of paying the difference between what was paid for the original model and the new model with the additional features, or receiving a refund of the portion of the purchase price on a pro rata basis allocable to the unexpired portion of the warranty. Company's decision will be final on repair, replacement or refund as aforesaid and Clause 11 and binding on the customer.
10. Warranty is valid within Company Service Network coverage only. In case the customer moves to a non-coverage area, customer needs to bring the product to nearby services network location, Company shall not be responsible for providing services to non-service network area.
11. Notwithstanding anything contained in this warranty terms, the Company shall not be liable in case of failure to provide services under this warranty in case of any force majeure event, i.e., due or attributable to any act of God, orders, restrictions or regulation of Government, Central or State, war working conditions, hostilities, riots, civil commotion, strike, lockout, labour trouble, explosion, insects, rodents or any other cause or circumstance of whatsoever nature beyond the control of A. O. Smith.
12. The customer will have no claim under this warranty in respect of any personal injury, sickness, illness, death, property damage or consequential damages, arising either directly or indirectly due to utilisation of product.
13. A. O. Smith reserves the right to make design and product changes or change the specification at anytime without any obligation to prospective buyers or customers or owners of products previously sold.
14. Warranty does not cover to any accessories provided by dealer or purchased by customer.
15. Warranty does not cover;
 - a. Plastic, cosmetic parts and exterior finish.
 - b. If defect or fault is caused or occurred due to improper installation by the customer or not installed as per A. O. Smith guidelines specified in product user manual.
 - c. If failure or damage due to plumbing or other arrangements like, usage of pressure pump, extension of power supply board, non-compatible power socket etc. connected to product. With regard to repairing the existing worn-out/defective part(s) or replacing the same and ascertaining the presence of above circumstances, the decision of A. O. Smith shall be final. In any such event, A. O. Smith will submit a prior estimate for approval or bill for the work to be carried out at the rate prevailing at that time.

- d. If product is repaired by unauthorised personnel and usage of non-recommended parts or consumables.
 - e. If product serial number is missing or altered.
 - f. If damage is caused by pest infestation.
 - g. If the input water emits pungent smell.
 - h. If the input water is discoloured.
 - i. If product is used for commercial purpose.
 - j. It is recommended to keep the surroundings of the Water Purifier free from dust and other foreign objects (like insects, cockroaches, ants and other pests), as any damage occurring due to the ingress of these foreign objects will not be covered under warranty.
16. a. Filters and RO membrane will be covered for any material damage, input malfunctioning under warranty for 1 year from date of purchase if water TDS <2000 ppm.
- b. If iron content is >0.3 ppm, it is recommended to use Iron filter for life of filters.
- c. Warranty on filters and membrane is valid provided product is used only for residential and self consumption purpose.
17. Calls which are site related to e.g. plumbing, tap leakage, electricity (within warranty period), etc. which is not related with product functionality, will be charged to customer as per rate card*.
18. All implied warranties and conditions under law, trade, custom or otherwise are excluded and the warranty and remedies as provided hereinabove are in lieu of all other warranties and remedies to the extent permissible under law.
19. NOTWITHSTANDING ANYTHING ELSE TO THE CONTRARY, THIS IS CUSTOMER'S SOLE AND EXCLUSIVE WARRANTY. ALL OTHER WARRANTIES INCLUDING A WARRANTY OF MERCHANTABILITY OR FITNESS FOR PARTICULAR PURPOSE ARE EXPRESSLY DISCLAIMED. A. O. SMITH SHALL NOT BE LIABLE FOR ANY CONSEQUENTIAL, INCIDENTAL, SPECIAL, PUNITIVE OR OTHER INDIRECT DAMAGES. TOTAL LIABILITY ARISING AT ANYTIME SHALL NOT EXCEED THE PURCHASE PRICE PAID WHETHER BASED ON CONTRACT, TORT, STRICT LIABILITY OR ANY OTHER LEGAL THEORY.
20. The warranty is issued at Bengaluru, and courts at Bengaluru shall have exclusive jurisdiction over matters covered or flowing from this warranty.

*Refer rate card www.aosmithindia.com

Post Warranty

1. The customer may be offered a yearly Service Contract (PHCP*) at the prevailing Company rates and terms.
2. In case the customer does not wish to enter the Service Contract, customer has the option of calling our Authorised Service Provider and get A. O. Smith Water Purifier unit serviced on actual basis i.e. by paying the Labour Cost and Spares needed to attend to that Service or Service Call at the prevailing Company rates. Such service will be rendered by the Company in towns or places where the Company has its Authorised Service Providers.
3. In case of product repair after warranty by Authorised Service Provider, all expenses of transporting the goods to and from the Authorised Service Provider shall be borne by the customer directly.
4. If, during such service, it is necessary for the Company or Authorised Service Provider to replace or repair defective components or parts, the customer shall be required to pay for the same as per the Company's prevailing price list.

* Visit www.aosmithindia.com for more details on PHCP (Product Health Care Plan).

Jurisdiction

The courts of competent jurisdiction at Bengaluru, Karnataka shall have exclusive jurisdiction over all matters arising out of any disputes in relation to the product.

Warranty Card

Customer Copy to be retained by the Customer

Invoice Number: _____ Dated: _____

Unit Serial Number: _____

Model: _____ Capacity: _____

Customer's Name: _____

Address: _____

Phone: _____

Mobile: _____

E-mail: _____

Dealer's Stamp and Signature

Company Copy to be sent back to the Company

Invoice Number: _____ Dated: _____

Unit Serial Number: _____

Model: _____ Capacity: _____

Customer's Name: _____

Address: _____

Phone: _____

Mobile: _____

E-mail: _____

Dealer's Stamp and Signature

Service and Maintenance

For Service needs:

Please contact our A. O. Smith

Customer Care Number : 1800-103-2468/1860-500-2468

SMS us : +91 99410 32468

E-mail us : aosmithcs@aosmithindia.com

Registered Office

A. O. Smith India Water Products Private Limited

(formerly known as A. O. Smith India Water Heating Private Limited)

Plot No. 300, Phase-2, KIADB Industrial Area, Harohalli, Kanakapura Taluk,
Ramanagara District - 562 112, Karnataka, India.

CIN: U31909KA2006PTC040282

■ Customer Care No.: 1800-103-2468/1860-500-2468

■ Website : www.aosmithindia.com

Disclaimer

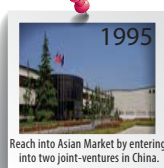
Power of 1 is limited to:

1. Available in selected cities, for details log on to www.aosmithindia.com or call at 1800-103-2468/1860-500-2468.
 2. Calls registered with A. O. Smith Customer Care Centre on working days before 4 p.m.
 3. Within city municipal limits only.
 4. Restricted to service requests only.
 5. Service may differ in case of Sunday, public holidays, natural calamities and under unavoidable conditions due to political and regional regulations.
-



OVER A CENTURY OF INNOVATION

A. O. Smith enjoys a rich history of achievements. A glimpse at our 142-years history reveals numerous engineering and technical achievements.



World's No. 1

Manufacturer of Water Heaters



Manufactured by A. O. Smith India Water Products Private Limited

(formerly known as A. O. Smith India Water Heating Private Limited)

Plot No. 300, Phase-2, KIADB Industrial Area, Harohalli, Kanakapura Taluk, Ramanagara District - 562 112, Karnataka, India.

Customer Care No. 1800-103-2468/1860-500-2468 ■ Website: www.aosmithindia.com

CIN: U31909KA2006PTC040282

Part No.: 333771-001_R0 Date: 23-06-2017

* Product colour and image may vary from the actual product.

Design, Feature and Specifications mentioned are subject to change without notice.